

## CITY OF SHEFFIELD

### METROPOLITAN DISTRICT

#### MEETING OF THE CITY COUNCIL – 6<sup>TH</sup> DECEMBER, 2017

#### COPIES OF QUESTIONS AND ANSWERS THERETO

##### Questions

##### Answers

#### Questions of Councillor Shaffaq Mohammed to the Leader of the Council (Councillor Julie Dore)

- |   |   |
|---|---|
| 1. How much was spent on the visits to China since you became Leader? | The majority of visits to China have not been paid for from Council resources, but have been funded from external sources. Given the large amounts of investment we have secured in Sheffield, I would have thought you would have supported this and joined me in promoting Sheffield as a destination for Chinese investment. |
| 2. How many Councillors went? Who were they?                          | The only Councillors who have been to China in this period are myself, Councillor Bramall and Councillor Mirfin-Boukouris, as above, the majority of these visits were funded through external sources.   |
| 3. How many officers went? Who were they?                             | A number of officers have been to China in this period, I do not have a record of every single officer who has been to China in the past six and a half years. However, as you would expect the Chief Executive, Director of City Growth and the Programme Manager have all been to China in this period.                       |
| 4. What class were those people flown?                                | As I have said above the majority of visits to China have not been paid for from Council resources, however, all flights purchased by the Council have been economy class. Sheffield City Council has never paid for any one officer or member to fly business class  |

5. Can you confirm that the Chief Executive did not accept remuneration as Acting Returning Officer during this year's general election?

This question is not for the Leader of the Council to answer as you know.

6. Following the Chancellor of the Exchequer's November 2017 Budget announcement of £1.7 billion Transforming Cities Funding, aimed at improving transport links and promoting growth in city regions:-

The Transforming Cities Fund was announced as part of the budget as you have said, therefore this was not a Council project.

**The budget said 'Transforming Cities Fund** – A £1.7 billion fund from the NPIF to support intra-city transport, will target projects which drive productivity by improving connectivity, reducing congestion and utilising new mobility services and technology. Half will be allocated via competition for transport projects in cities and the other half will be allocated on a per capita basis to the 6 combined authorities with elected metro mayors – £74 million for Cambridgeshire and Peterborough, £243 million for Greater Manchester, £134 million for Liverpool City Region, £80 million for West of England, £250 million for West Midlands and £59 million for Tees Valley – enabling them to invest in their transport priorities.

This is in the Government's budget report which you were able to read yourself, it is not my job to do your research for you.

(a) do you know how much funding has been allocated to Greater Manchester, if so how much?

See above

(b) do you know how much funding has been allocated to West Midlands, if so how much?

See above

(c) how much would Sheffield City region have received if we had an Elected Mayor?.

This is something we do not know, however, it is reported that South Yorkshire will be able to access this fund when the Mayor is elected.

Question of Councillor Ian Auckland to the Leader of the Council (Councillor Julie Dore)

What is the likely timescale to completion of the Sheffield City Region (SCR) Governance Review?

Your representative on the Sheffield City Region Overview and Scrutiny Committee can follow this up at the next meeting.

Questions of Councillor Douglas Johnson to the Leader of the Council (Councillor Julie Dore)

1. Will you comment on the Court's decision to refuse the application to commit Councillor Alison Teal?

This is a legal matter for the Court.

2. Who authorised the statement released to the media that the case was dismissed "on a technicality"?

This was a statement made by the Council and followed the normal approval procedures

3. What do you consider that technicality to be?

Please see below from the judgement

"8. I would accept that, as a matter of ordinary language and before considering the definition in the order, the Council's approach is correct. An area consisting of plastic barriers forming three sides and a wall forming the fourth side could properly be described as a safety zone. The area from which it is sought to exclude protesters or other members of the public is clearly identified.

9. However, the order adopts a particular definition of "safety zone" and it is this which must be applied in the present case. The order prohibits protesters from entering or remaining in a "safety zone" within the scope of the definition. It does not prohibit protesters from entering or remaining in an area which does not comprise a "safety zone" as defined. In circumstances where a protester's liberty is at stake, a strict approach is necessary."

Question of Councillor Alison Teal to the Leader of the Council (Councillor Julie Dore)

1. Given the conspicuous poverty of evidence against me that I breached the High Court Injunction, who made the decision to spend tens of thousands of public money in an attempt to send me to prison?

This question has been answered by Councillor Lodge

Questions of Councillor Martin Smith to Councillor Olivia Blake (Cabinet Member for Finance)

1. How many Freedom of Information requests has the Council received in the last 12 months?

During the period November 2016 to October 2017, Sheffield City Council received **2,140** requests.
2. How many of these requests were refused in part?

During the same period November 2016 to October 2017, the City Council closed **2,241** requests, of these requests we issued a part refusal in response to **388** requests.
3. How many of these requests were refused completely?

During the period November 2016 to October 2017 the City Council issued a full refusal in response to **330** requests.
4. What was the average response time to a FOI request?

The Council does not specifically monitor the average response time for response to FOI requests; during this period an average of 96.7% of requests were responded to within the statutory timeframe for responding to FOI requests (20 working days).

Questions of Councillor Colin Ross to Councillor Ben Curran (Cabinet Member for Planning and Development)

- |   |  |
|---|--|
| 1. Recent Government housing projections suggest Sheffield needs to build 2,092 houses per year. For which years is this a target?  | It isn't a target. It is a projection by the Government that relates to the period 2016-2026.  |
| 2. Citywide Options for Growth proposed a target of 43,000 new homes by 2034 within a range of 40,000 to 46,000. To reach 46,000 by 2034 at a yearly rate of 2,092 would require a start date of 2013. Is this correct? | No.  |
| 3. To reach 43,000, Sheffield City Council has set out building options which would still require about 550 homes to come from small multiple Green Belt releases. Is this still the case?                              | The Council will publish its updated position as part of the consultation on options for the Local Plan in 2018.   |
| 4. Following the collapse of the Sheffield City Region Deal, what steps have been taken with Rotherham MBC to formalise a co-operative relationship over the allocation of land designated for housing?                 | Whilst I am more glass half-full about the prospects for the SCR than you are Councillor Ross, I can confirm that we have been working with Rotherham to produce a Statement of Common Ground on housing need. |

Questions of Councillor Martin Smith to Councillor Ben Curran (Cabinet Member for Planning and Development)

- |   |       |
|---|-------|
| 1. In the last two years, how many organisations have sought pre-planning application advice for the potential redevelopment of the Central Library building? | None. |
| 2. What were the total fees payable to the Council?   | N/A.  |

Question of Councillor Roger Davison to Councillor Jackie Drayton (Cabinet Member for Children, Young People and Families)

Considering what you said in Council about the disparity in average age at death between Wards, would you:-

- |  |  |
|--|--|
| (a) congratulate Sheffield's oldest citizen, aged 108, who lives in one of the 'deprived' areas of Sheffield and can you ask how she has managed to live well above the average age? | Average life expectancy (currently 82.5 for women in Sheffield, 2012-2014 data) is precisely that, an average, therefore, we would expect cases above and below this average.  |
| (b) find out for death in all Wards in Sheffield   | The table below (b) shows life expectancies at ward level, along with premature deaths (all causes, less than age 75, directly standardised mortality rate per 100,000 population). Due to smaller populations when dividing the city into wards, all data are aggregated 2011-2015. The table is organised by male life expectancy (although similar patterns would be seen if sorted on any of the other columns), and shows that there is a correlation between life expectancy and deprivation. Burngreave is the ward with the lowest life expectancy for men and women; whereas Ecclesall has the second highest life expectancy for both men and women. |
| (c) explain what part does life styles play in how long people live, and what part depends on genetics?  | The answer is partly in the question; its a mix of both. Page 11 of the 2016 Director of Public Health report offers more detail (detailed below at (c).   |
| (d) outline what changes in life expectations can be achieved over a short period of time, say five years?   | Life expectancy calculations, given they cover a whole population and themselves are calculated over a three year period, move slowly and by small fractions. The table below (d) shows the trend over the last five periods measured: 2009-11 to 2013-15 (life expectancy is calculated on the basis of three year periods). England is included for comparison.  |

(e) set out what statistical confounders make crude analysis difficult?

In recognition of potential statistical confounders, the life expectancy calculation uses directly standardised mortality rates. Such mortality rates are standardised on the basis of age and sex.

Public Health England define life expectancy figures as

“The average number of years a person would expect to live based on contemporary mortality rates.

For a particular area and time period, it is an estimate of the average number of years a newborn baby would survive if he or she experienced the age-specific mortality rates for that area and time period throughout his or her life.

Figures are calculated from deaths from all causes and mid-year population estimates, based on data aggregated over a three year period.

Figures reflect mortality among those living in an area in each time period, rather than what will be experienced throughout life among those born in the area. The figures are not therefore the number of years a baby born in the area could actually expect to live, both because the mortality rates of the area are likely to change in the future and because many of those born in the area will live elsewhere for at least some part of their lives.”

(f) outline what effect the £52m Burngreave New Deal funding had on raising life expectancy?

The Burngreave New Deal for Communities programme was a neighbourhood based regeneration programme that ran between 2001 and 2011. It did not have as one of its ambitions the raising of life expectancy, and as such has not been evaluated on this basis.

It is therefore not possible to respond to the question, particularly as cause and effect – especially those from an individual programme of activity such as this - are impossible to establish with average life expectancy figures alone. It may be possible to show an association between investment and



life expectancy but correlation is not causation.

Notwithstanding the above, the Burngreave New Deal for Communities Programme did have a community strength and wellbeing theme (which covered health and wellbeing issues), and the final evaluation of the programme conducted by Sheffield Hallam University concluded that: “there have been overall improvements over the lifetime of the programme, as shown by the number of residents reporting that their own health was not good, decreasing in numbers”.

Question of Councillor Douglas Johnson to Councillor Jayne Dunn (Cabinet Member for Neighbourhoods and Community Safety)

At November's meeting, I asked "How many replies have been received from organisations that own or manage high rise residential properties in Sheffield, in response to letters from the Director of Housing?" and you stated that you would get back to me on this. When will you provide this information?

The Director of Housing and Neighbourhoods Service has supplied you with an answer, which I have seen.

Questions of Councillor Martin Smith to Councillor Mazher Iqbal (Cabinet Member for Business and Investment)

1. With regards to the New Retail Quarter / Heart of the City project (including project Cavendish):
  - (a) How much has the Council spent thus far on consultancy and legal fees on both projects (including Queensberry Real Estate)?

£1.234 million on legal fees

We have not used consultancy for the project, we have used professional services that would be expected in any development of this nature which is clearly not consultancy such as architects, engineers, quantity surveyors, project managers, chartered surveyors, traffic engineers.
  - (b) What is the total forecast for spend on consultancy and legal fees to the end of both projects?

We have £1.974 million forecast spend on legal fees.

Please see answer above about consultants.
  - (c) How often do you receive a financial report from the project Director?

I meet with the project Director monthly.
2. With regards to the Sichuan Guodong investment deal:
  - (a) Have you attended any meetings with the Sichaun Guodong Group or their representatives since September?

No
  - (b) How much did the Council spend in total on negotiating and administering the investment deal with the Sichuan Guodong Construction Company Limited?

It is estimated that the Council has spent in the region of £20,000 (not including officer time).  
Note that the Council made this agreement with Sichuan Guodong Construction Group, not the company quoted in the question.
  - (c) How much has the Council spent in total thus far on negotiating and administering the investment deal with the Sichuan Guodong

## Construction Group?

### Questions of Councillor Adam Hanrahan to Councillor Mazher Iqbal (Cabinet Member for Business and Investment)

- |   |  |
|---|--|
| 1. Could you have a video/tele-conferencing meeting with the Guodong investment group?  | That would be possible, yes  |
| 2. Have you or any officers used video/tele-conferencing technology to meet with Guodong investment group in the past?  | Yes, meetings have been conducted with representatives using video/ tele conferencing.                       |
| 3. Have you or any officers ever used video/tele-conferencing technology for any meeting in any setting?  | Yes.   |
| 4. Has any Cabinet Member used video/tele-conferencing technology in their role as an elected member?   | Yes.   |
| 5. In response to a question from Councillor Martin Smith at November Council, you said "officers have been working with Guodong" - What does this work entail? | Answering questions, preparing information, drafting responses.  |
| 6. Which officers have met with the Guodong Group since you became Cabinet Member for Business and Investment?  | Director of City Growth and China Programme Manager.   |
| 7. How many times have officers met with the Group?   | Officers have met with representatives of the Group in the region of 20 times in total.                      |
| 8. Where were these meetings held?  | Sheffield, London, Manchester and Chengdu.   |
| 9. How do these officers relay to you what has occurred in these meetings?  | Officer – Member briefings.  |
| 10. How often do they relay this information to you?  | As required.   |
| 11. Do you have scheduled any meeting with the Guodong investment group or it's representatives within the next:  | We are currently finding dates to meet Guodong again soon, either before the New Year or shortly afterwards. |

3 months?  
6 months?  
1 year?  
2 years?  
5 years?

12. At what point between the publication of the Council press release regarding the exclusivity deal for the Central Library with Guodong Group and it being on the Council website as part of a FAQs on the deal, and last Council meeting, was it realised that a deal had not been signed?

The exclusivity deal is not signed, we have responded to a number of Council questions and requests for information on this issue and have always stated that.

Question of Councillor Douglas Johnson to Councillor Mazher Iqbal (Cabinet Member for Business and Investment)

What is the latest position with the commercial interest from the property developer in the Central Library and Graves Gallery?

The Council is expecting an updated position shortly.

Questions of Councillor Roger Davison to Councillor Mary Lea (Cabinet Member for Culture, Parks and Leisure)

1. How much income do the Parks receive from sources other than parking and the Council allocation?

Income minus car parking is £4.47m (This includes income from other Council departments for maintenance of other green space).
2. What is the cost of the upkeep of the Parks?

Costs £8.0m (This includes costs to other Council departments for maintenance of other green space).
3. Does the Northern television, in the opinion of the Cabinet Member, give enough coverage to public events in Sheffield such as tramlines and theatre shows/plays?

Sheffield has had equal coverage. All our big events are covered by both regional news stations and we continue to work with them and our local stations for both TV and Radio to develop relationships to improve coverage further. However, we would always argue for more coverage to be given to the wonderful events programme we have in our Vity.
4. Has the Cultural Consortium consulted or included you, or any Member or officer, in any consultation on the overall strategy for the distribution of the money given by the Arts Council?

All funds applied for by the Culture Consortium from Arts Council England are for specific projects, and have to be spent in line with the funder's priorities and the work plan submitted with each bid. There are no funds for general distribution.
5. Does the Central Library have any problems from roof leakages?

Currently there are no problems with roof leaks affecting the Central Library.

Questions of Councillor Adam Hanrahan to Councillor Bryan Lodge (Cabinet Member for the Environment and Streetscene)

- |   |   |
|---|---|
| 1. What discussions have the Council had with the Department for Communities and Local Government (DCLG) regarding the Amey Streets Ahead Contract? | There have been some informal officer discussions, however, as you will be aware we have worked predominantly with the Department for Transport on the contract.  |
| 2. What discussions have the Council had with the HM Treasury regarding the Amey Streets Ahead contract?  | HM Treasury together with the Department for Transport approved the 'Outline and Final Business Cases' for the Streets Ahead Contract. The Council's Streets Ahead Contract Manager is in regular contact with the DfT and where appropriate HMT regarding the overall operation of the contract. |
| 3. Who are the private investigators (who can be found at tree fellings) actually contracted to?  | Amey.   |
| 4. Where is the data, collected by private investigators in relation to tree protestors, stored?  | Stored by Amey. Any information passed to the Council's Legal Department sits within their case management system.  |
| 5. Who owns it?   | Amey.   |
| 6. What safeguards are in place regarding it?   | Stored by Amey however, any information passed to the Council's Legal Department sits within their case management system.  |
| 7. What is its purpose?   | The purpose to build a portfolio of evidence against individuals who breach the court injunction.   |
| 8. How long will it be stored?  | Processed images will be stored for up to 12 months.  |
| 9. What rights do citizens have to access this information?   | Applications can be made to receive copies of any process data by individual concerned only. Normal data protection rules apply   |

Questions of Councillor Douglas Johnson to Councillor Bryan Lodge (Cabinet Member for the Environment and Streetscene)

- |  |   |
|--|---|
| 1. When is it anticipated that the Council will complete its review and publish further parts of the Streets Ahead contract? | The Council has reviewed the redacted contract which is now with Amey to review. We are gradually releasing the documents to the public through the Council website with the Main Body of the Contract and Schedule 1 having already been re-released. Obviously, the issues with the tree replacement programme are taking up a lot of resources at Amey which is slowing down the review and re-release of the redacted contract. |
| 2. What is the Council's current position on filming of campaigners protesting about the Streets Ahead contract?             | The Council will review any evidence which is provided in connection with illegality but is not currently filming protesters.   |
| 3. Has the Council used covert filming and does it have plans to do so?  | No.   |
| 4. As I asked at the November meeting, under the Streets Ahead programme:-   |   |
| (a) How many miles of roads have been resurfaced (not including remedial resurfacing)?                                       | 695 miles.  |
| (b) How many miles of pavements have been resurfaced (not including remedial resurfacing)?                                   | 1,460 miles.  |
| (c) How many streetlights have been replaced?  | 64,604.   |
| (d) How many traffic signals have been replaced?   | 127 sites.  |
| (e) How many new litter bins have been provided?   | At the start of the contract, 2,467 bins were on the network, this number has increased by 385 to 2,852   |
| (f) How many trees have been   |   |
| (i) removed,   | 4,963   |
| (ii) planted?  | 4,663. All trees that are removed will be replaced.   |



Questions of Councillor Alison Teal to Councillor Bryan Lodge (Cabinet Member for the Environment and Streetscene)

1. When will the holistic, innovative, sustainable tree strategy, promised several years ago for Sheffield's Highway Trees, be published?

Wasn't promised several years ago. The work started about a year ago and a draft will be available early in the New Year. The focus will be Parks and Countryside and not street trees
2. Given the conspicuous poverty of evidence against me that I breached the High Court Injunction, who made the decision to spend tens of thousands of public money in an attempt to send me to prison?

The decision to take legal action to seek injunctions was made by the Director of Legal Services on instruction from the Director of Culture in accordance with Section 222 of the Local Government Act 1972.
3. Why have plastic barriers been erected around numerous trees which are not being actively worked on? They are restricting access on some pavements, notably Ladysmith Avenue. Residents are being forced to walk on the road and they are creating a blockade for disabled people and parents with prams.

This is ultimately a matter for Amey, who are responsible for operational matters. However, we are aware that protestors and law breakers are causing Amey to constantly change their programme to get their lawful work done. Campaigners complaining about the impact of disruption they've caused are disingenuous. Amey apologises for any disruption caused. The aim is to complete the programme in a logistically efficient sequence however, due to the conduct of a few, our programme has to remain flexible.
4. Why were residents woken by workers erecting plastic barriers around numerous trees in the early hours of the morning of the 27<sup>th</sup> November in Nether Edge?

As above, this is ultimately a matter for Amey, who are responsible for operational matters. You are referring to a specific issue of which I am not aware, however, it is quite common for highways contractors to begin work early in the morning, particularly preparatory work.
5. Why have plastic barriers been erected around trees not being actively worked on and blocking residents access to their homes? Woodstock Road is an

As above, this is ultimately a matter for Amey, who are responsible for operational matters, we apologise for any inconvenience, please report any

example where this has happened?

6. The Rivelin valley is currently being considered in the Flood Mitigation Plan as an appropriate area to prevent flooding in Sheffield. What will be done to protect the unique industrial archaeology and the rising tourist economy in Rivelin valley?

issues to Street Ahead, our aim is to conclude the works at the earliest opportunity, we will address any reports of resident access being blocked.

The Council's preferred 'slowing the flow' option in the Upper Don catchment is for the Environment Agency and the Council to reach an agreement with Yorkshire Water to use their existing compensation reservoirs above the city to store floodwater. Should this option prove undeliverable, then the Rivelin Roscoe location has been selected as a reserve 'slowing the flow' option as the most cost beneficial temporary flood storage area (FSA) option in the Upper Don catchment.

Should it prove to be necessary, any future design of the Rivelin Roscoe FSA option will assess and mitigate, where possible, impacts relating to the environment, heritage and tourism in the Rivelin Valley. Any future design would be undertaken in consultation with relevant stakeholders.

7. Why do the security staff engaged by the Council/Amey refuse to give ID, contrary to SIA guidelines?
8. Whose decision was it to employ such a heavy duty security presence at felling sites?
9. What evidence does the Council have to support assertions that tree campaigners are using violence against Amey/SCC staff and how many cases have been taken up by the CPS and prosecuted?

This is a matter for Amey.

Amey, as stated above they are responsible for operational issues.

Amey staff face daily abuse from protestors and so are many residents. Wearing masks and sitting outside people's houses in the morning darkness is unacceptable, intimidating and done to evade the courts. Amey are liaising closely with the police on a regular basis about the behaviour of protestors.

There are ongoing police

investigations, the aim is to minimise the risk to staff and the general public. As seen in the media recently residents, staff and our suppliers regularly suffer intimidation and abuse from tree protestors.

Questions of Councillor Steve Ayris to Councillor Cate McDonald (Cabinet Member for Health and Social Care)

- |   |  |
|---|--|
| 1. When and by whom was the decision to sell Hurlfield Lodge taken?   | No decision has been made to sell Hurlfield View. The property was initially put up for sale in error. This was quickly spotted and rectified. |
| 2. On what basis was the guide price of £350,000 - £400,000 determined?   | See above.   |
| 3. Why was the property withdrawn prior to auction?   | See above.   |
| 4. What is Hurlfield Lodge's current status? Has it now been sold? At what price? Is it still on the market? For sale? Under offer subject to contract? Is it now subject to a revised plan(s)?   | See above.   |
| 5. Have any purchasers/developers expressed an interest in purchasing/developing the property? If so, are the proposed purpose(s) for its future use known?   | See above.   |
| 6. Has the Council considered a public/private partnership arrangement for the continued use of Hurlfield View as a care home or any other related public-service use ( eg a GP practice, a regional emergency medical centre, or similar)? | See above.   |
| 7. Please clarify Hurlfield Lodge's current status and any plans under consideration for its further, future use or development by the Council or any other interested party/ies.   | We are currently considering options for future use.   |

Questions of Councillor Ian Auckland to Councillor Jack Scott (Cabinet Member for Transport and Sustainability)

1. Please provide details of outstanding requests to provide parking restrictions on Norton Lane in the vicinity of Meadowhead and Little Norton Lane.

There are five requests for waiting restrictions over the wider Norton area. The earliest is dated April 2011 and the latest is September 2015. However, there is only one request for restrictions on Norton Lane close to Meadowhead. This request is dated April 2014.
2. Are you intending to give notice to withdraw from the Sheffield Bus Agreement?

The future of the Sheffield Bus Agreement is presently under review, pending the outcome of wider Sheffield City Region/Passenger Transport Executive governance changes. It would obviously be precipitous to act hastily at this point, given the Elected Mayor will be endowed with a range of transport and regulatory powers.

Questions of Councillor Rob Murphy to Councillor Jack Scott (Cabinet Member for Transport and Sustainability)

1. What were the results of ecological and biodiversity surveys carried out before the decision was made to remove 80% of highway shrubbery?

The deliberations and factors affecting this decision can be found in the relevant report. You had the opportunity to ask all the questions on this matter when it was Called-In. I do not propose to re-run that exercise now.
2. What do you think the air pollution impact of removal of 80% of highway shrubbery will be?

It will be immeasurable, given the move towards a more grassed and woodland approach in place of shrubs. In any event, it is just as likely to be positive as negative.
3. What do you think the air pollution impact of widening the inner ring road to three lanes will be?

I believe the latest design suggests a marginal, favourable impact in creating a more efficient junction for buses and additional facilities for cyclists and pedestrians.

## Attachments to Councillor Jackie Drayton's replies

(b)

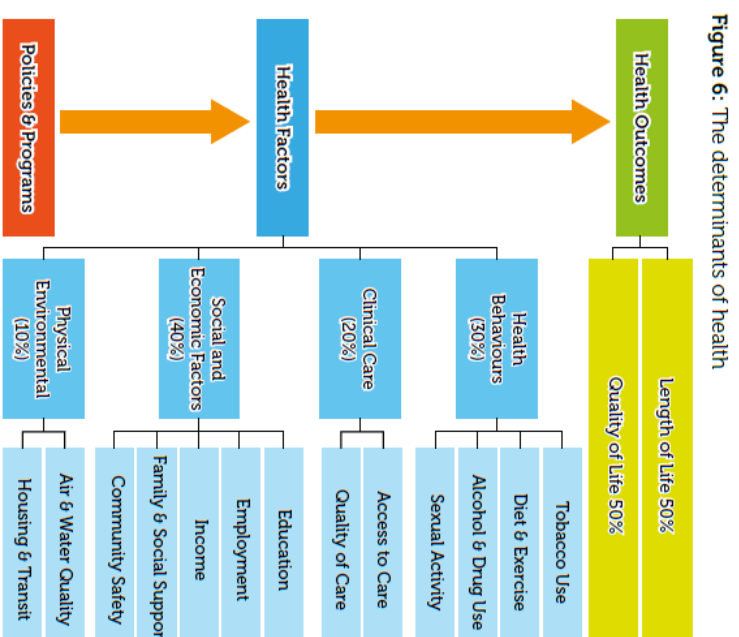
	Male	Female	Male	Female
	Years	Years	Premature deaths rate	Premature deaths rate
Burngreave	74.65	77.6	709.1	455.68
Firth Park	75.21	79.76	648.92	391.74
Woodhouse	75.89	81.55	552.77	345.65
Manor Castle	76.07	83.33	621.23	367.49
Broomhill & Sharrow Vale	76.18	80.12	443.48	317.33
Shiregreen & Brightside	76.6	82.39	577.24	348.6
Darnall	76.81	80.46	542.37	351.04
Park & Arbourthorne	77.01	81.67	547.37	324.22
Walkley	77.46	82.89	564.4	325.73
Gleadless Valley	77.48	81.12	514.29	366.82
Richmond	77.52	81.67	511.54	282.47
Southey	77.68	80.84	530.78	359.31
Beauchief & Greenhill	78.37	82.77	494.06	306.09
Hillsborough	78.46	83.21	445.79	306.73
Beighton	78.74	82.47	453.62	268.82
East Ecclesfield	79.39	81.64	395.69	252.93
Nether Edge & Sharrow	79.4	82.07	396.41	277.32
West Ecclesfield	80.16	86.37	399.99	257.51
Birley	80.21	85.96	424.18	239.07
Stocksbridge & Upper Don	80.23	83.07	352.1	267.58
Graves Park	80.87	82.63	333.71	224.68
Mosborough	81.44	84.79	397.22	230.03
Stannington	81.98	85.48	324.24	218.7
Dore & Totley	82.12	87.24	285.64	177.24
Crookes & Crosspool	82.29	82.87	263.86	199.28
Fulwood	82.86	86.17	277.96	193.62
Ecclesall	85.52	88.45	184.3	141.82
City	87.75	94.71	373.49	213.99

# What causes poor health and wellbeing?

The single biggest cause of ill health, early death and health inequalities are socio-economic factors such as unemployment, lack of income, low educational attainment and poor quality housing; but these are not the only factors. Collectively they account for around 40% of health and wellbeing outcomes.

The other 60% is accounted for by: lifestyles (such as smoking, lack of physical exercise, poor diet and alcohol consumption); communicable and infectious diseases (such as HIV/AIDS or Tuberculosis); the quality and availability of health care (particularly primary, preventative and early intervention health services such as GP practices); and environmental threats to health (including excess winter deaths from living in a cold home and death and ill health due to pollution from traffic).

Action on just one or two of these factors won't be enough to achieve the improvements in health and wellbeing outcomes or sustainability of our health and social care services that we need to see in Sheffield. That's why our approach must focus on: maximising people's life chances; optimising healthy behaviours throughout the life course; protecting people from communicable and environmental threats to their health; and increasing the health and wellbeing value that health and social care services deliver.



(d)

	SHEFFIELD		ENGLAND	
	Males	Females	Males	Females
	Value	Value	Value	Value
2009-2011	78.3	82.1	82.1	82.7
2010-2012	78.6	82.4	82.3	82.9
2011-2013	78.7	82.4	82.4	83.0
2012-2014	78.8	82.5	82.5	83.1
2013-2015	78.7	82.5	82.5	83.1