

Solutions to Parking Issues

- Parking is not a major issue within Crosspool, more so in Crookes due to the nature of the roads and lower off-street parking.
- South Yorkshire Police deal with any reports in conjunction with Sheffield City Council depending on the nature of the report.

Council Responsibilities

'Lower level contraventions are dealt with by the council's 'Street Scene' team.

- Parking across drop-kerbs
- In cycle lanes
- Away from kerbs
- Obstructing pedestrians

The public can report offences online at:

[Report an incorrectly parked vehicle | Sheffield City Council](#)

Dangerous Parking

South Yorkshire Police only deal with dangerous parking.

Operation 'Parksafe' has finished. It was successful initial and achieved its aims. However, it was discontinued because:

- Central Ticket Office couldn't deal with the number of submissions without significant expansion.
- It was indiscriminate. Vital services were being reported.
- There were concerns over people being summonsed for wrong offences.
- Many of those submitted were not in the public interest.

This page is intentionally left blank



City Transport

Road Safety Delivery in Sheffield

26th September 2024

Safe Systems and Vision Zero



The Safe System approach is built upon two basic facts about people.

1. People make mistakes and will do on the roads.
2. People are vulnerable to being killed or seriously injured if they are involved in a crash.

The Safe System [approach] seeks to design these two facts out of the equation. This means that all elements of the road system need to work together as one to minimise the chance of a collision, or, if a collision does take place, to prevent death or serious injury from occurring.

There are 5 Pillars to the Safe System approach:

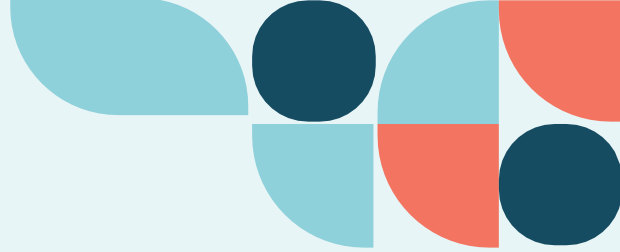
Vision Zero

Our aim is for a Vision Zero approach to road safety management and is based on the belief that no death or serious injury is

Whilst we want to achieve our Vision Zero aim in the shortest possible time this action plan acknowledges the significant challenge that will be faced to achieve it. We have therefore set an interim target of 50by30 - a 50% reduction in Killed and Serious Injuries (KSIs) by 2030 to measure our progress against.

To reduce the number of KSI casualties in the short, medium, and long term, our immediate focus will be data-led and city-wide





Education

Engineering

Enforcement



Education

Primary, Secondary, Sixth Form, Youth
Offender Services Interventions

Crucial Crew

Modeshift Stars

Bikeability

Publicity and Communication,

Engineering



Small Schemes
(Bollards, Signing and
lining...)

Local Safety Schemes

School Streets

DfT Road Safety Fund
(A625)

20mph

VAS

Early Action Fund

Ped Crossing

Enforcement

School Crossing Patrol Wardens

TMA Part 6

Parking Enforcement

SYP





Any questions?

Get in touch:
Transport@Sheffield.gov.uk



Useful Links:

<https://democracy.sheffield.gov.uk/documents/s66706/SCC%20Road%20Safety%20Action%20Plan%202024%20-%202029.pdf>

South Yorkshire Safer Roads Partnership: <https://sysrp.co.uk/>



Report a
parking

There are two paths for reporting an incorrectly parked vehicle:

you can contact our enforcement team to report vehicles if you think they are breaching a restriction that a PCN may be issued for

you can contact the
which are breaching a legal restriction

[Report an incorrectly parked vehicle | Sheffield City Council](#)



How to contact Parking Enforcement:

[Report an incorrectly parked vehicle | Sheffield City Council](#)

Email:

parkingenforcement@sheffield.gov.uk

Online at:

[Report an incorrectly parked vehicle | Sheffield City Council](#)

The following are examples of incorrect parking that can be reported to the enforcement team:

Parking on yellow lines -

Stopping on zig zag lines by a crossing or outside a school

Parking in a permit bay without a valid permit

Using a disabled bay without a valid Blue Badge

Parking in a loading bay without loading

Stopping in a restricted bus stop or taxi rank

parked in a suspended bay

parking in a Restricted Parking Zone (except in marked bays)

parking on a footway that has parking restriction signs

parking for longer than the permitted time in a parking bay

parking after the expiry of paid for time

Not parking correctly within the bay markings

Double parking (More than 50cm from the edge of the carriageway)

D
paving has been provided

Towing a vehicle

In some circumstances as well as issuing a parking fine, we may also tow the vehicle away.

We may consider this if the vehicle is left on parking restrictions:

- in a dangerous or obstructive manner

- blocking access to disabled bays for Blue Badge holders

- where roadworks are taking place

We may also remove vehicles where fines have been ignored, ie not paid or unsuccessfully appealed against.

If a Blue Badge is being misused, the badge may be taken away and a parking fine issued. Drivers could also be prosecuted for misuse of

! " " " # \$

Report incorrect parking to the police

The following are examples of incorrect parking that can be reported to the police:

Double white lines

% &

Dangerous parking where there are no restrictions in place, for example, on bends, brows of hills and junctions

one-way traffic

box junctions

access only

white-hatched areas

pedestrian crossings (can also be enforced by CEOs)

If you find an example of incorrect parking that is listed above, please call

101

Any questions
on this please
contact us at

