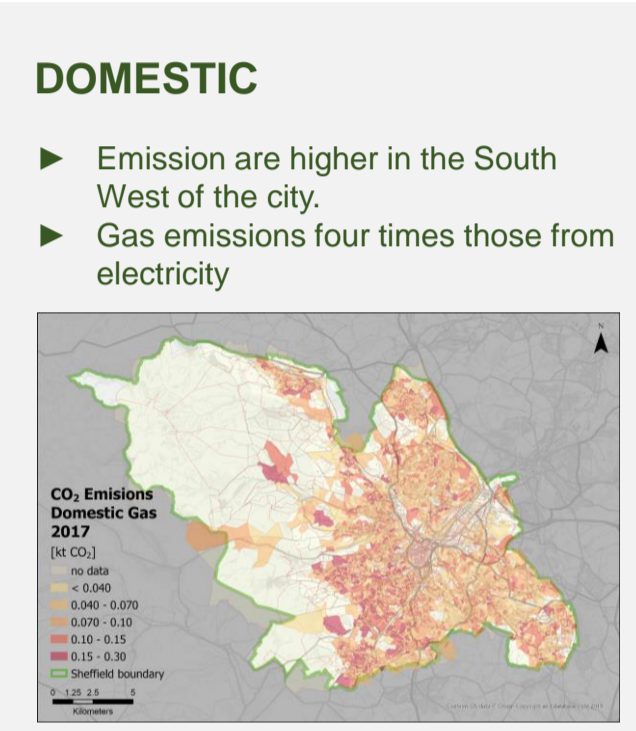
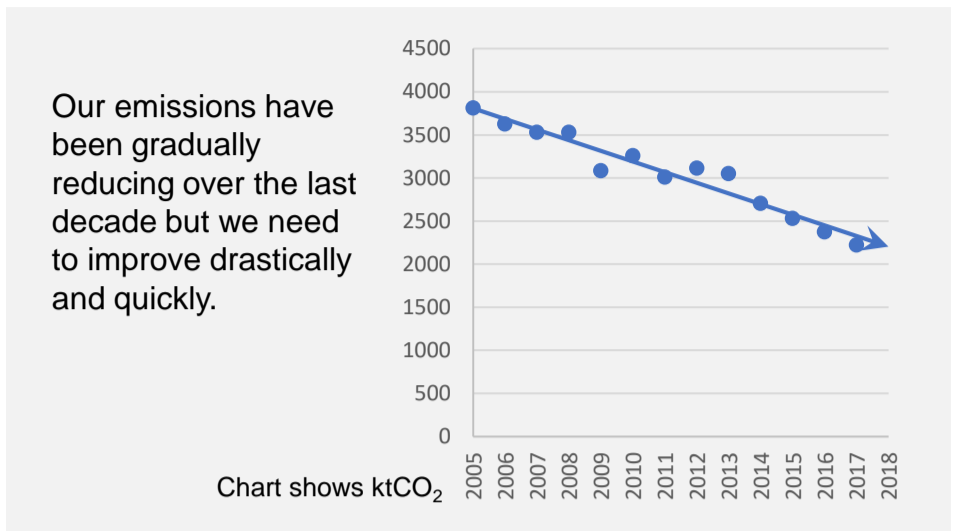
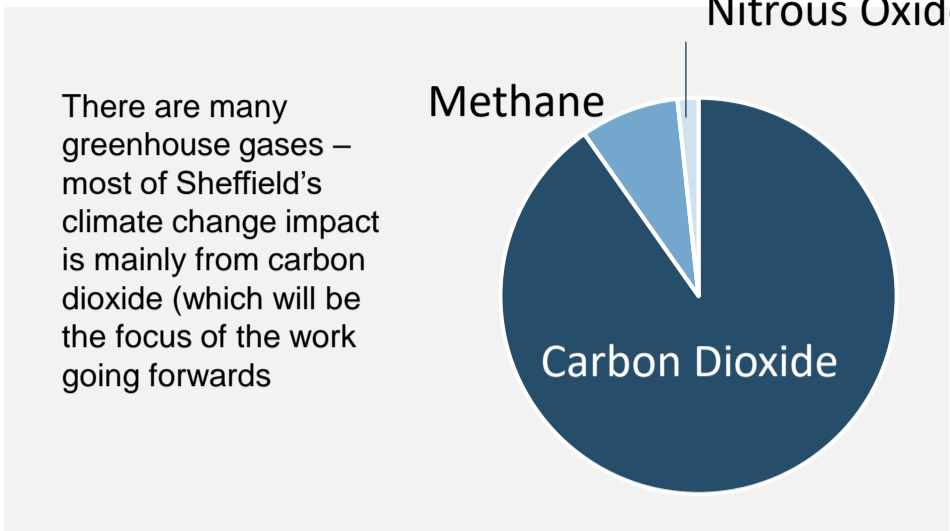
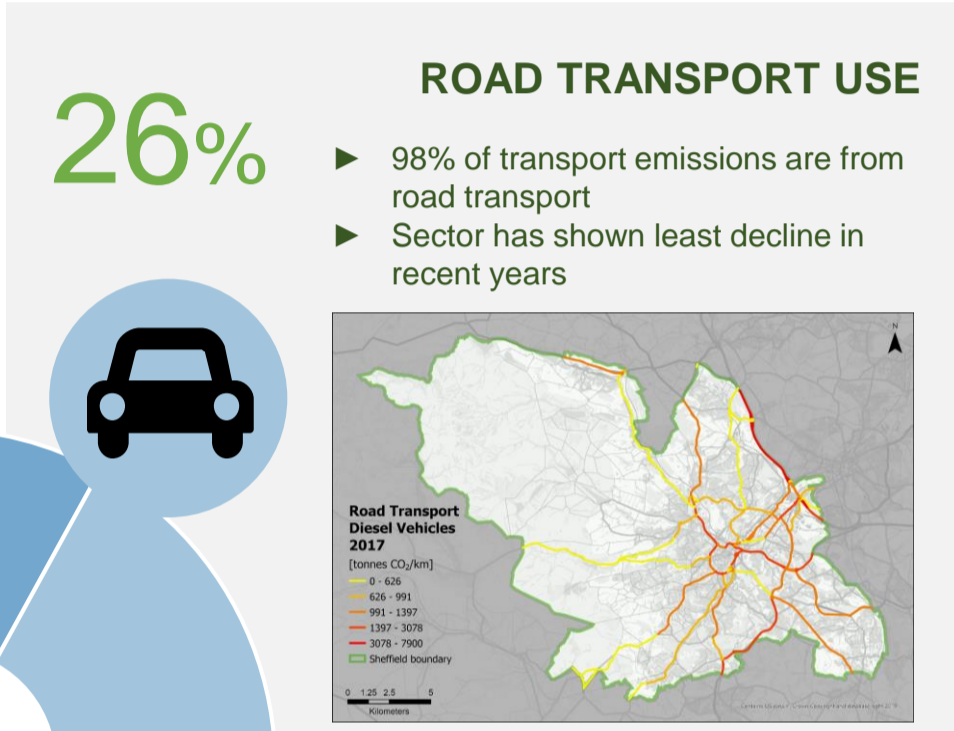


2030 Net Zero Carbon Sheffield

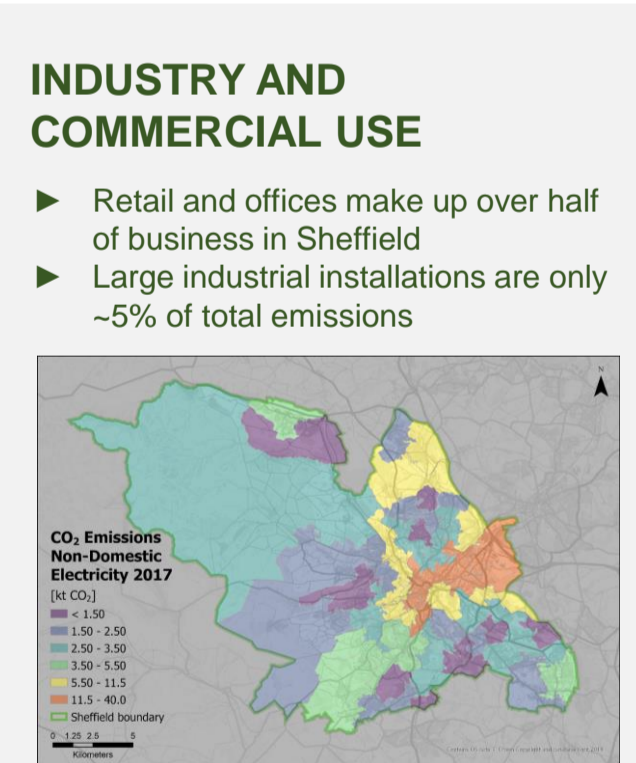
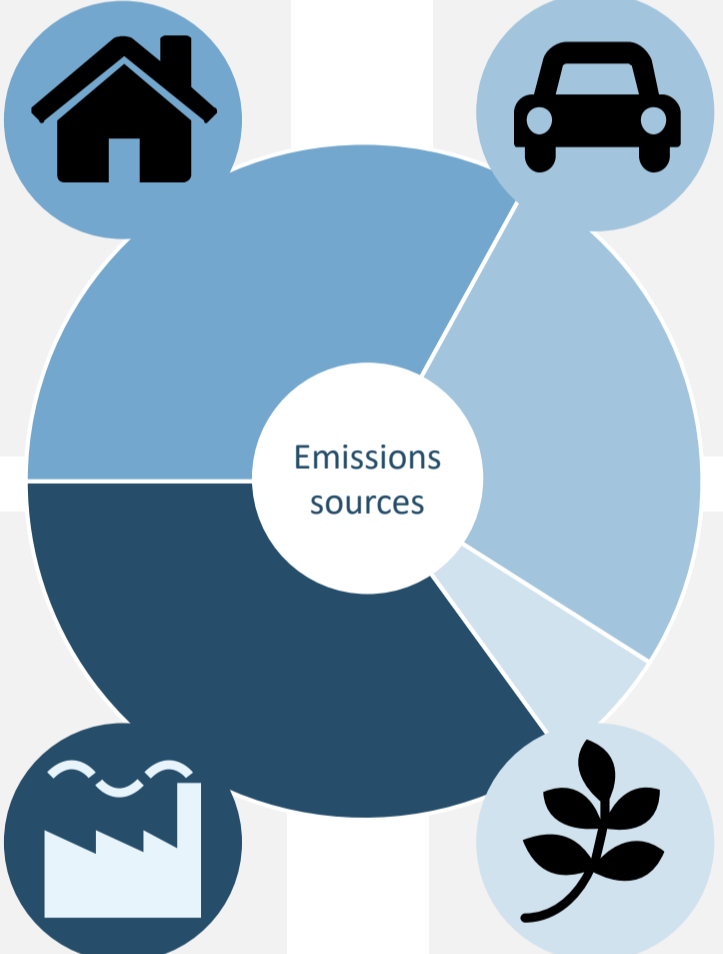
Baseline inventory – where are we now?



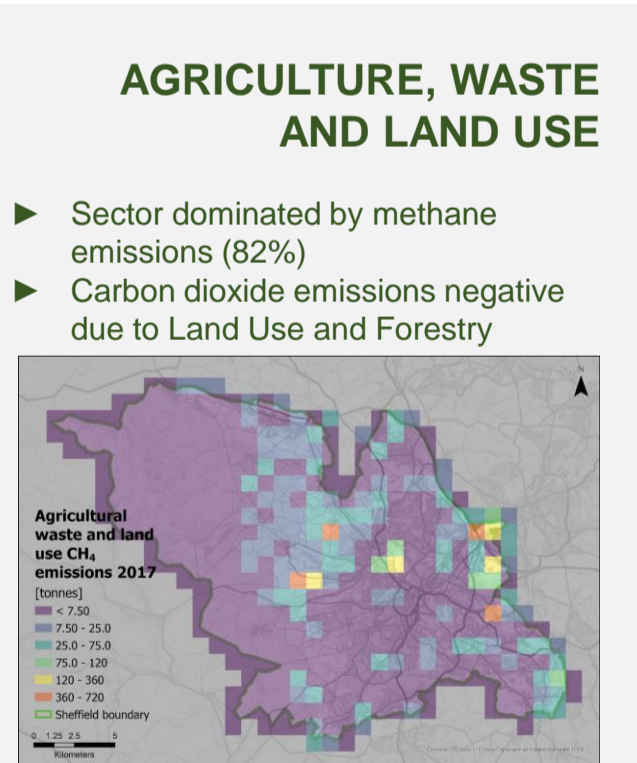
33%



26%



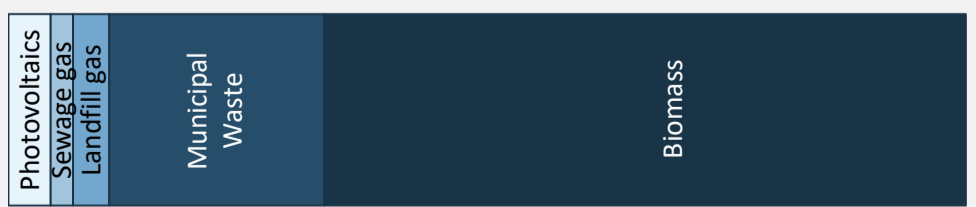
35%



6%

LOCAL ENERGY GENERATION AND STORAGE

- Sheffield generates 473GWh of electricity (right) and 253GWh of low carbon heat locally every year (registered sources)
- There are 5,451 photovoltaic installations but this represents only 2% of the 247,000 homes.



Information based on 2017 data (the latest year for which it is available)

