

Safer Sheffield Crime and Disorder Partnership Annual Report

Overview and Scrutiny Management Board

17 March 2022

Maxine Stavrianakos

Head of Community Safety & Safer Neighbourhoods
Superintendent Simon Verrall, South Yorkshire Police

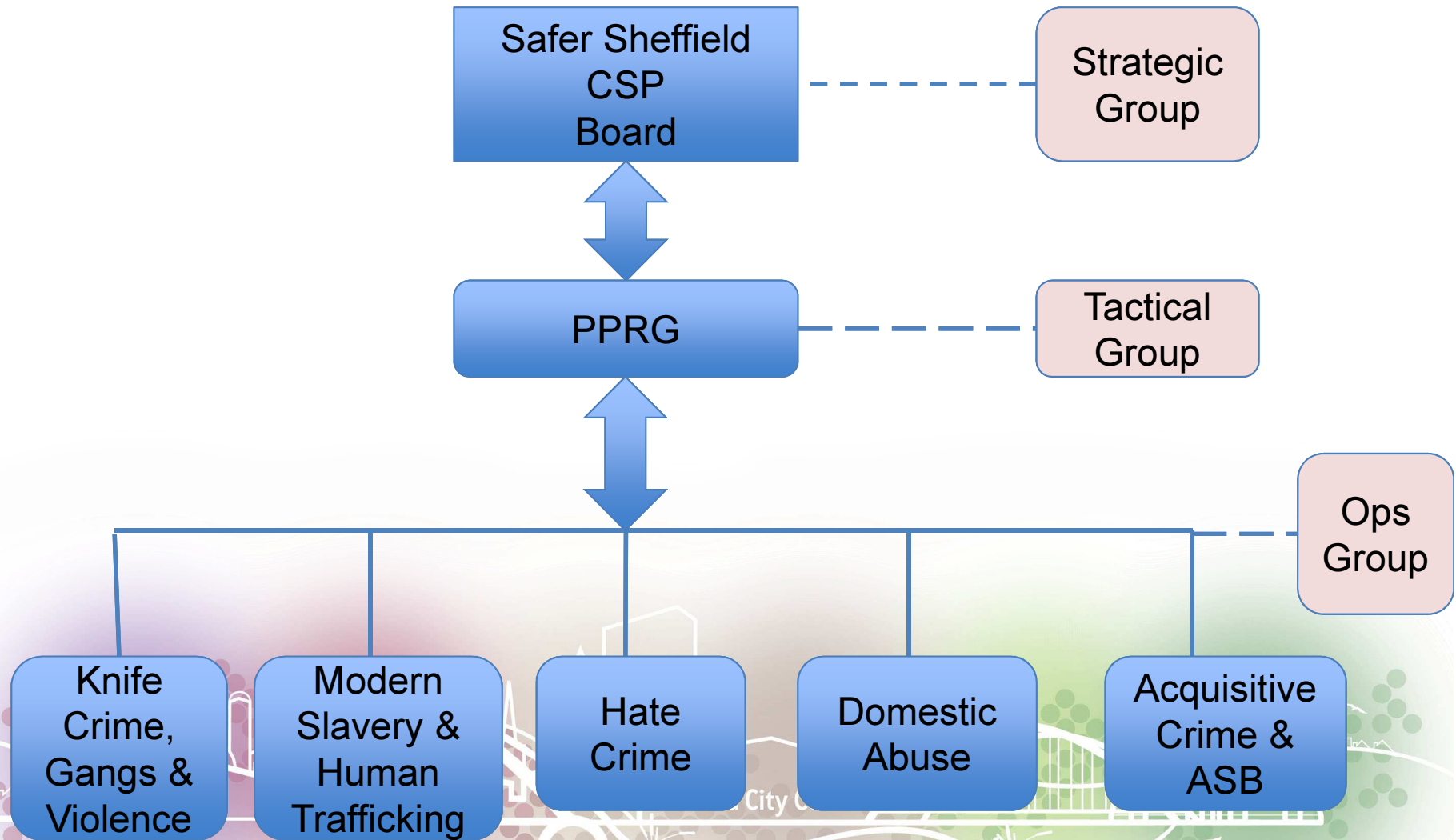


Sheffield Community Safety Partnership

- Statutory Community Safety Partnership (CSP)
 - 5 statutory “responsible authorities” led by Local Authority and Police
 - Bring together expertise, knowledge, consistency of action

- Statutory requirement to have a local strategy for tackling Community Safety

CSP Current Partnership Structure

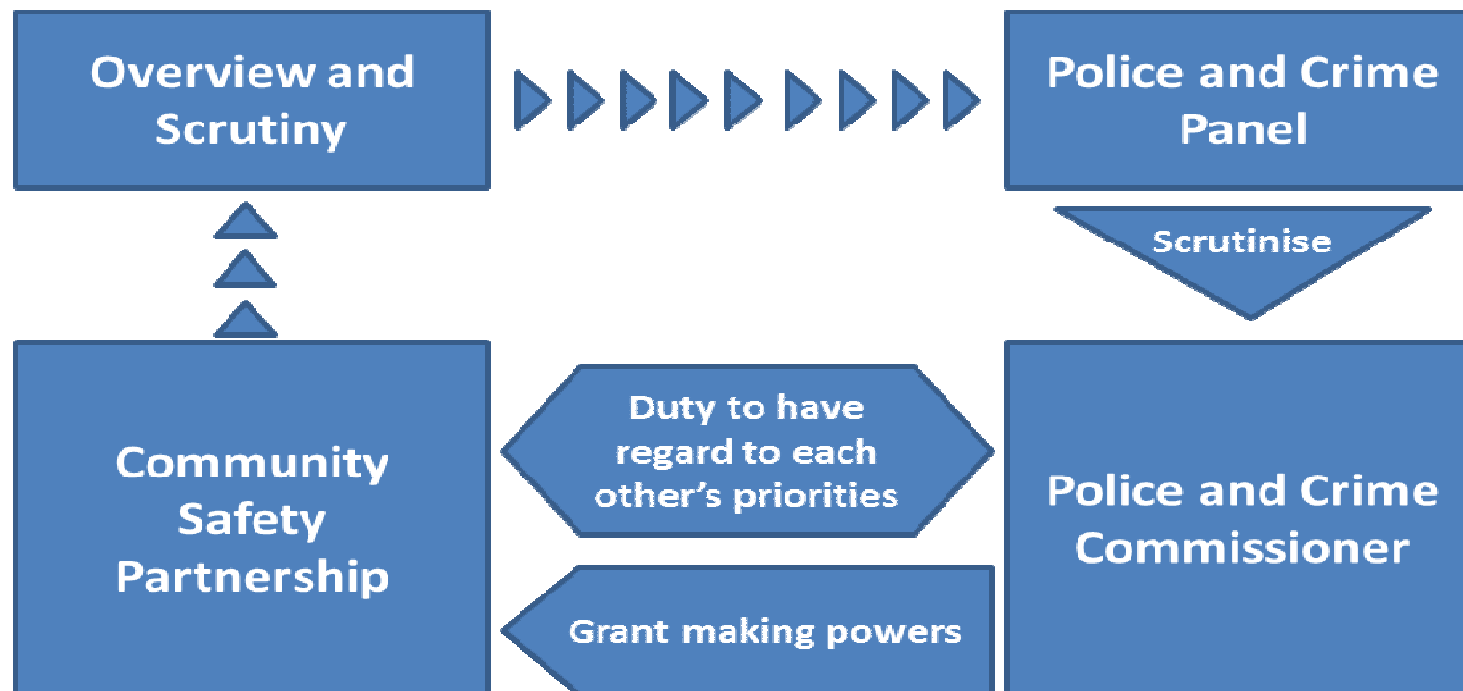


Relationship with the Police and Crime Commissioner

- The Community Safety Partnership and the Police and Crime Commissioner have a duty to have regard to each other's priorities.
- The Community Safety Partnership receive financial support via a grant from the Crime Commissioner to assist in achieving our set priorities

Police and Crime Commissioner

- Police and Crime Panel scrutinises PCC
- Duty for PCC and CSP to have regard to each other's priorities



Community Safety Plan / Priorities

- Three Year Community Safety Plan (address priorities)
- Joint Strategic Intelligence Assessment Review
(under taken every 12 months reference to crime and disorder information)
- New Priorities determined for period 2021 to 2024 via full JSIA process.
- 17-20 priorities as a result of the JSIA Process.
 - Modern Slavery and Human Trafficking
 - Knife Crime, Gangs and Violence
 - Domestic Abuse
 - Hate Crime
 - Acquisitive Crime and ASB

Community Safety Budget

- Funding from PCC and SCC
- Fortify and Partnership analysts
- Supporting and protecting vulnerable people
- Hate Crime Coordinator
- Domestic abuse perpetrator programme
- Tackling crime, anti-social behaviour and reducing reoffending by specific projects
 - Dark Nights



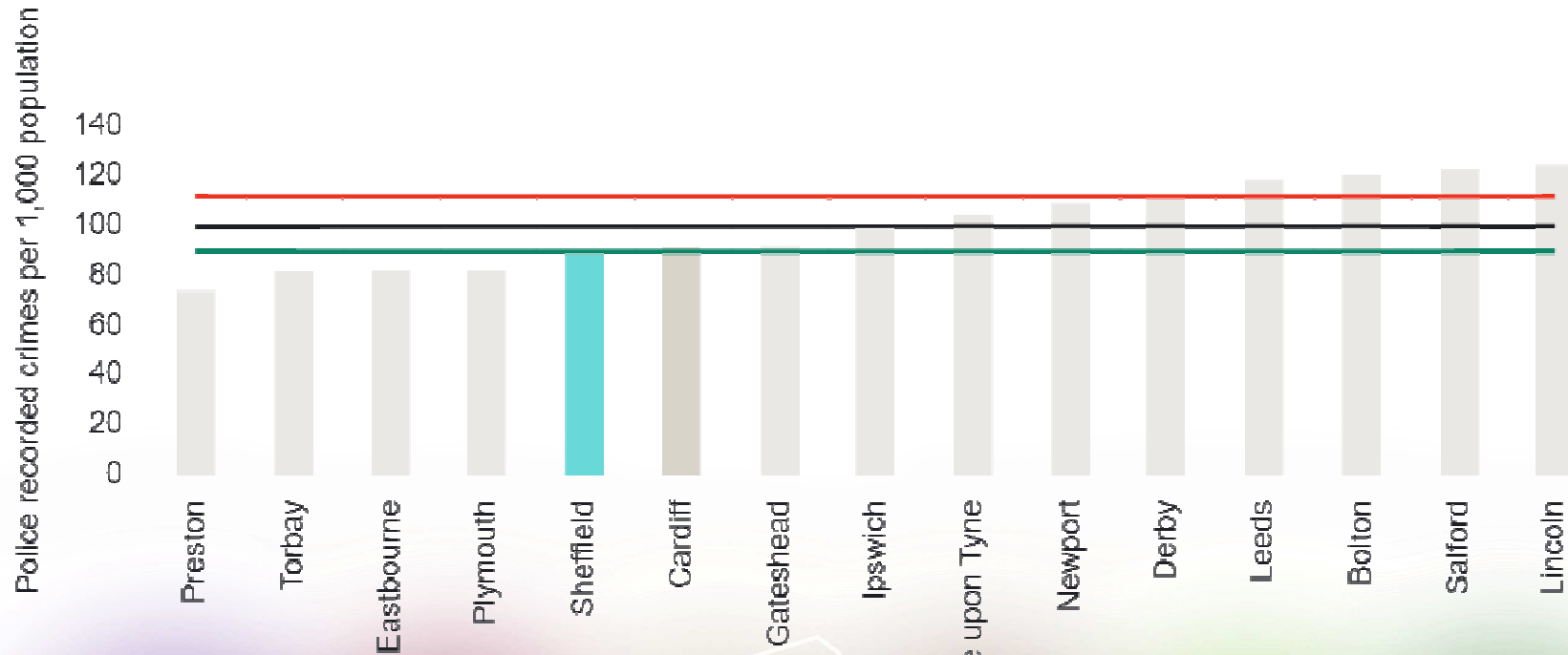
Performance Comparison – National Picture

(Index Red – Sheffield, Green - most similar group, Orange - S.Yorks)



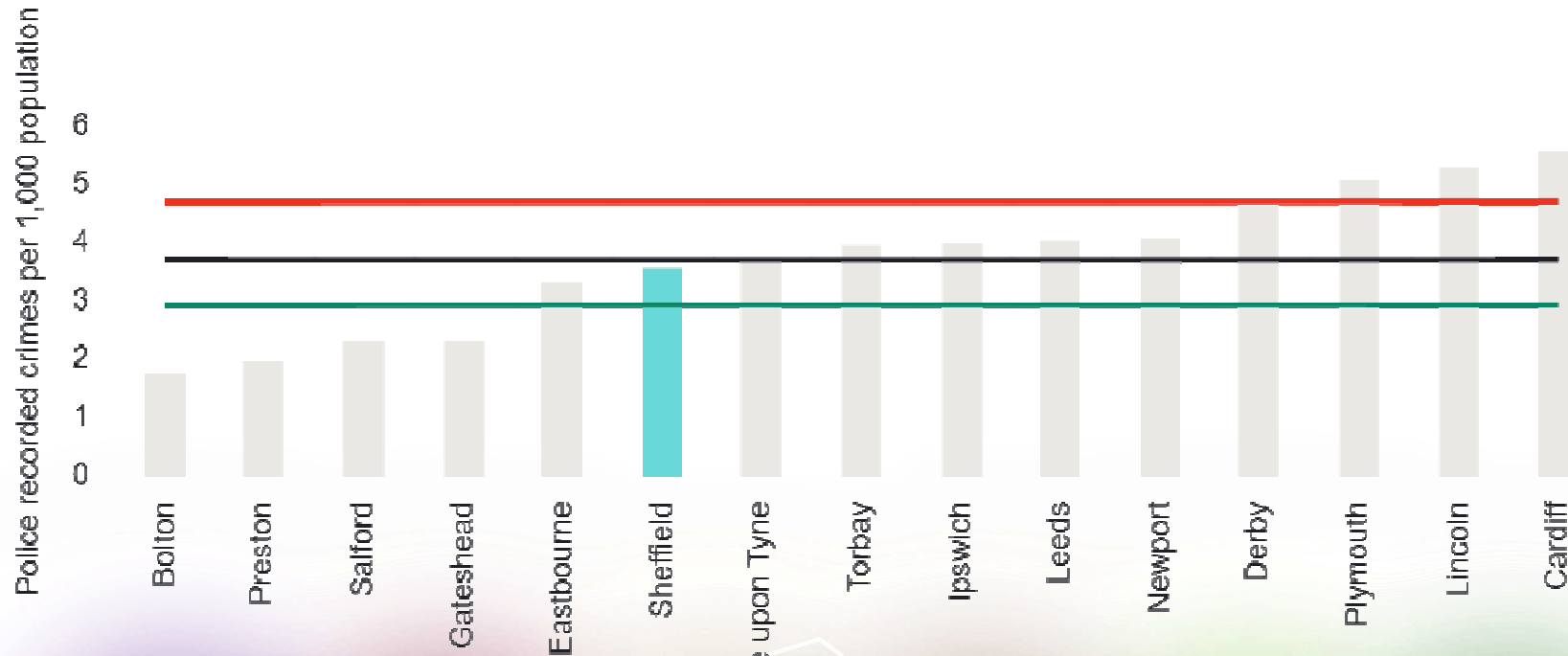
Crime in Sheffield compared to similar areas

Green – lower bound, Purple – average, orange – upper bound



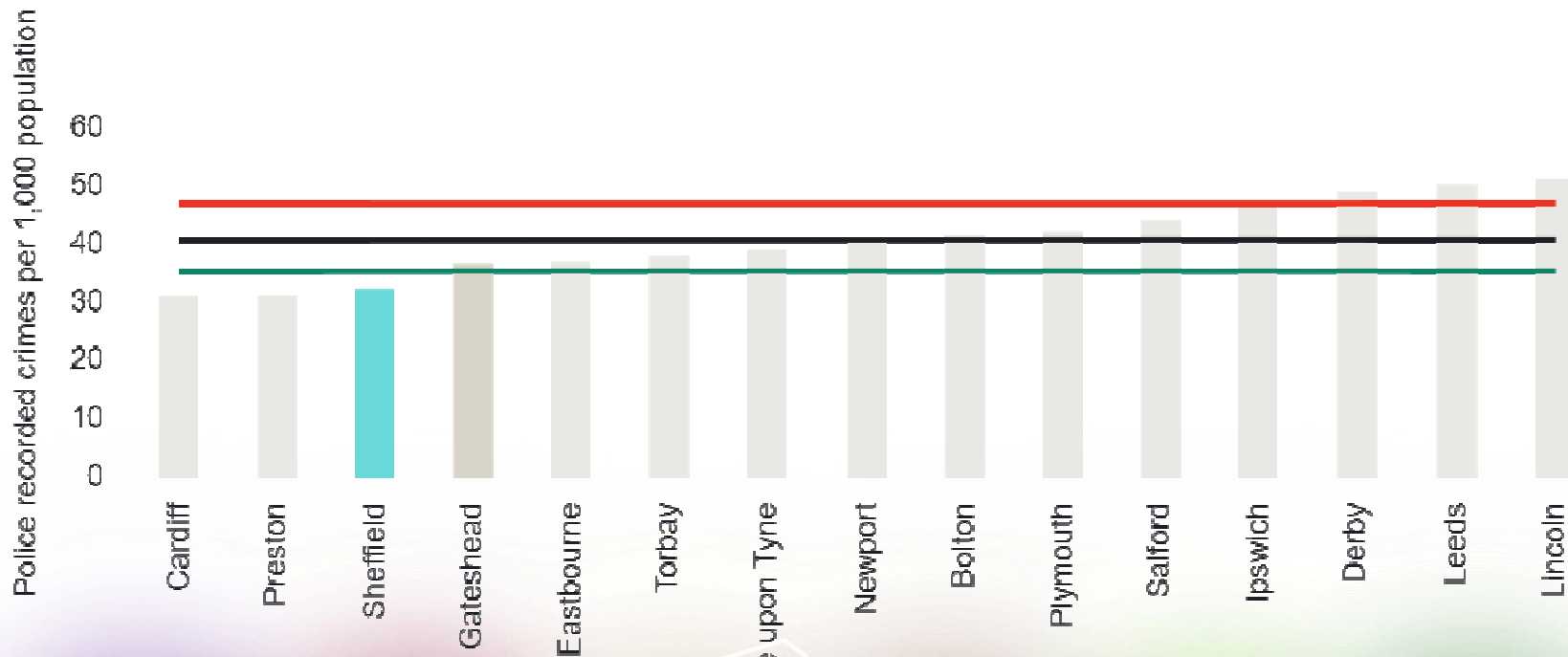
Drug Offence Rate compared to similar areas

Green – lower bound, Purple – average, orange – upper bound

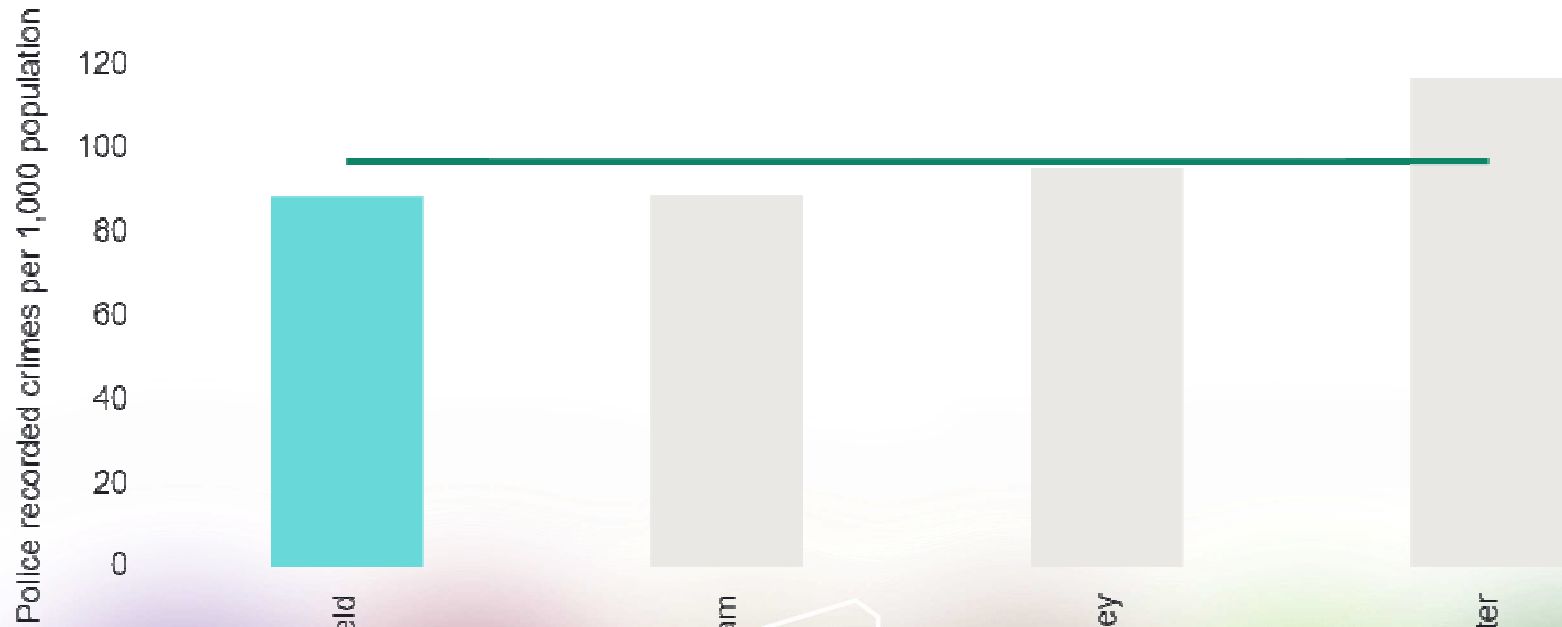


Violent & Sexual Offences rate compared to similar areas

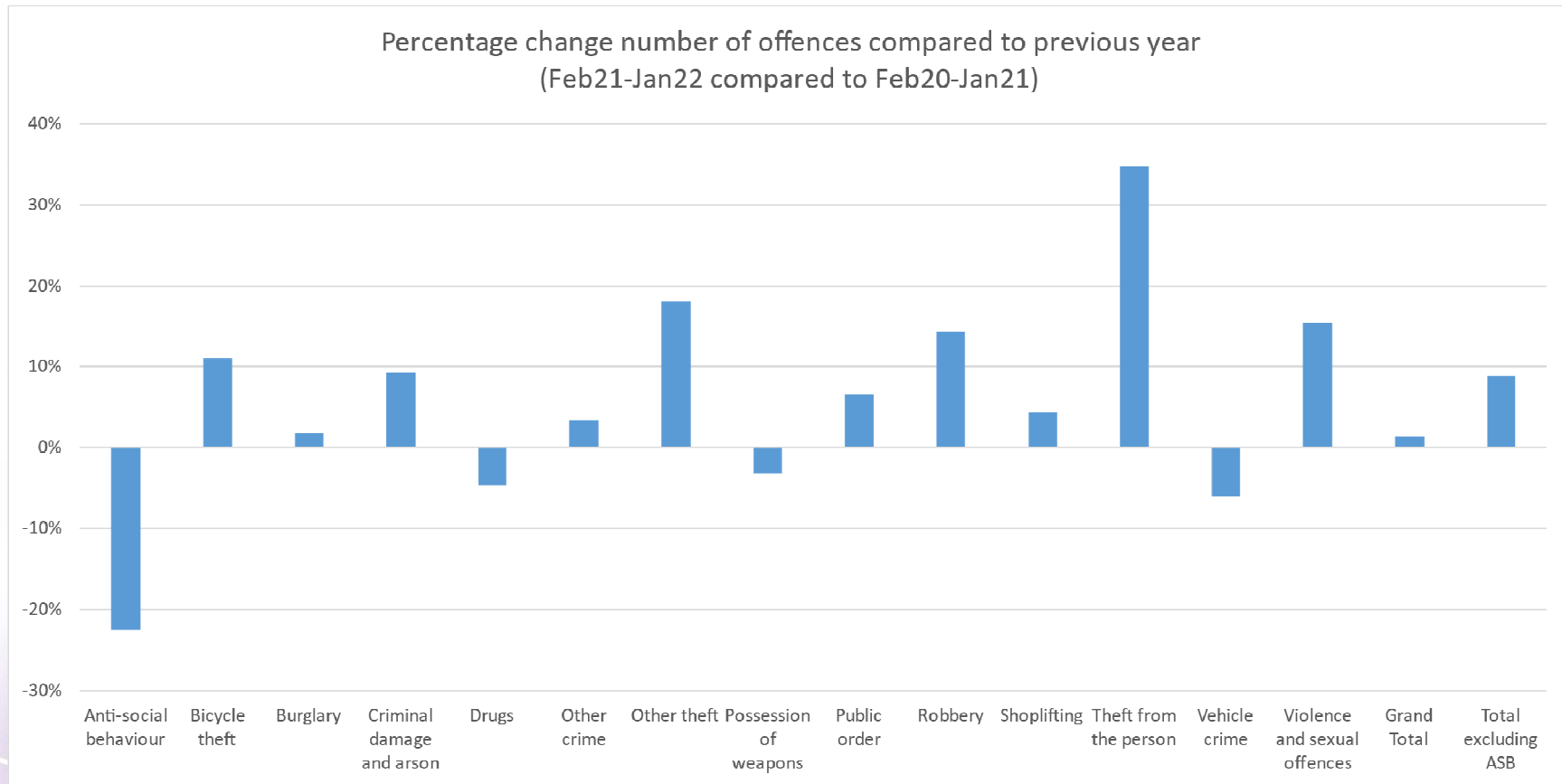
Green – lower bound, Purple – average, orange – upper bound



South Yorkshire



Sheffield Performance



Partnership Activities Summary

- Despite COVID Restrictions majority of funded CSP Projects have contributed to achieving their respective aims and objectives for example:
- Response to COVID - Partnership have supported and engaged with other stakeholders' in promoting a 'City Centre' Action Plan
- Contributed Staff and expertise to VRU produced Action Plan for Sheffield and assisted in commissioning a number of projects Street Drs, Call It Out (Improving responses to LGBT & DA Victims)
- Obtained Safer Street Funding Round 2 & 3. Currently working with the PCC's office on Round 4.



Community Safety & Safer Neighbourhood Services

- Partnership team sat in Communities Service providing an integrated service for Communities linked in to LAC's
 - Community Safety
 - Safer Neighbourhood Co-ordinators
 - Neighbourhood Action Groups (NAG's)
 - Partnership Support
 - Community Justice Panels
 - City Centre ASB
 - Anti-Social Behaviour
 - Social Housing, Private Landlords. Owner Occupiers
 - Sustainable Communities Officers (previously known as wardens)
 - Home Office Funded Prevent Team
 - South Yorkshire Police - Increase in resources
 - Inspector, Sergeant and PCs including Designing Out Crime Officer (DOCO)
 - ASB Problem Solving Unit – 1 sergeant & 5 PC's
 - Mental Health & Vulnerable Persons Team
 - Partnership Hate Crime Coordinator

South Yorkshire Violence Reduction Unit

- One of 18 areas to receive additional funding to form a SY Violence Reduction Unit (VRU) Unit. Based In Sheffield
- Increase in Home Office Funding from 22/23
- SCC Support seconded staff from SCC are fully embedded within the VRU based in Sheffield
- Sheffield VRU Action Plan in place managed by CSP Board
- 4 themes of the CSP link well to the 16 priorities of the Violence Reduction Plan.
- Gap identified in training and awareness of hate crimes in 11–16-year-olds and this is a growing age range for both victims and perpetrators.
- New community-based sessions and Training packages for young people and parents by Learn Sheffield
- Knife bin installations Wolseley Road, city centre at Devonshire Green and Birley
- Joint projects with the Sheffield BID Team for
 - bleed kits in the city centre, these will be in cabinets located next to defibs and will help if anyone is stabbed or shot with emergency packing materials before medical help arrives. Working with A&E Clinical nurse lead to help with training when the bleed kits arrive.
 - Anti Spiking kits for Sheffield bars and clubs .Launched in March with Comms campaign.

FORTIFY

Sheffield's multi-agency approach to tackling organised crime. Follows 4P approach (Prepare, Prevent, Protect, Pursue), with two key priorities:

- the disruption of organised crime groups
- supporting vulnerable people away from exploitation
- Proactive disruption of organised crime gangs (OCG's)
- Asset Recovery
- Executing Warrants
- Drug Seizures
- Weapon Recovery
- Safeguarding Vulnerable
- Prosecute Offenders
- Coordinating Support Services for Vulnerable Adults and Children
- Re Housing high risk / vulnerable where appropriate
- Council invests x1 Safer Neighbourhood Coordinator within Fortify coordinating responses to incidents

Community Safety Plan 21-25

- Safer Sheffield has established its Community Safety Plan working to the following priorities:
 - protect the vulnerable
 - address the supply of drugs;
 - address the impact of crime;
 - address the impact of anti-social behaviour;
 - create safer communities and identify new and emerging threats;
 - reduce reoffending (cross-cutting theme); and
 - reduce violence against women and girls (cross-cutting theme).

- **Funding**

Current Picture

- Crime and ASB
 - ASB figures relatively low
 - Crime returning to pre Covid levels with steep rises in vehicle offences & domestic abuse incidents
- Fortify
 - County Lines
 - Master Class
 - Awareness Training Sessions
- Work with LAC's

This page is intentionally left blank