

Safer and Stronger Scrutiny and Policy Development Committee

Sheffield Safer and Sustainable Communities Partnership Annual Report

Page 17

Safer and Stronger Scrutiny and Policy Development Committee
1st April 2021

Maxine Stavrianakos
Head of Community Safety & Safer Neighbourhoods



Sheffield City Council



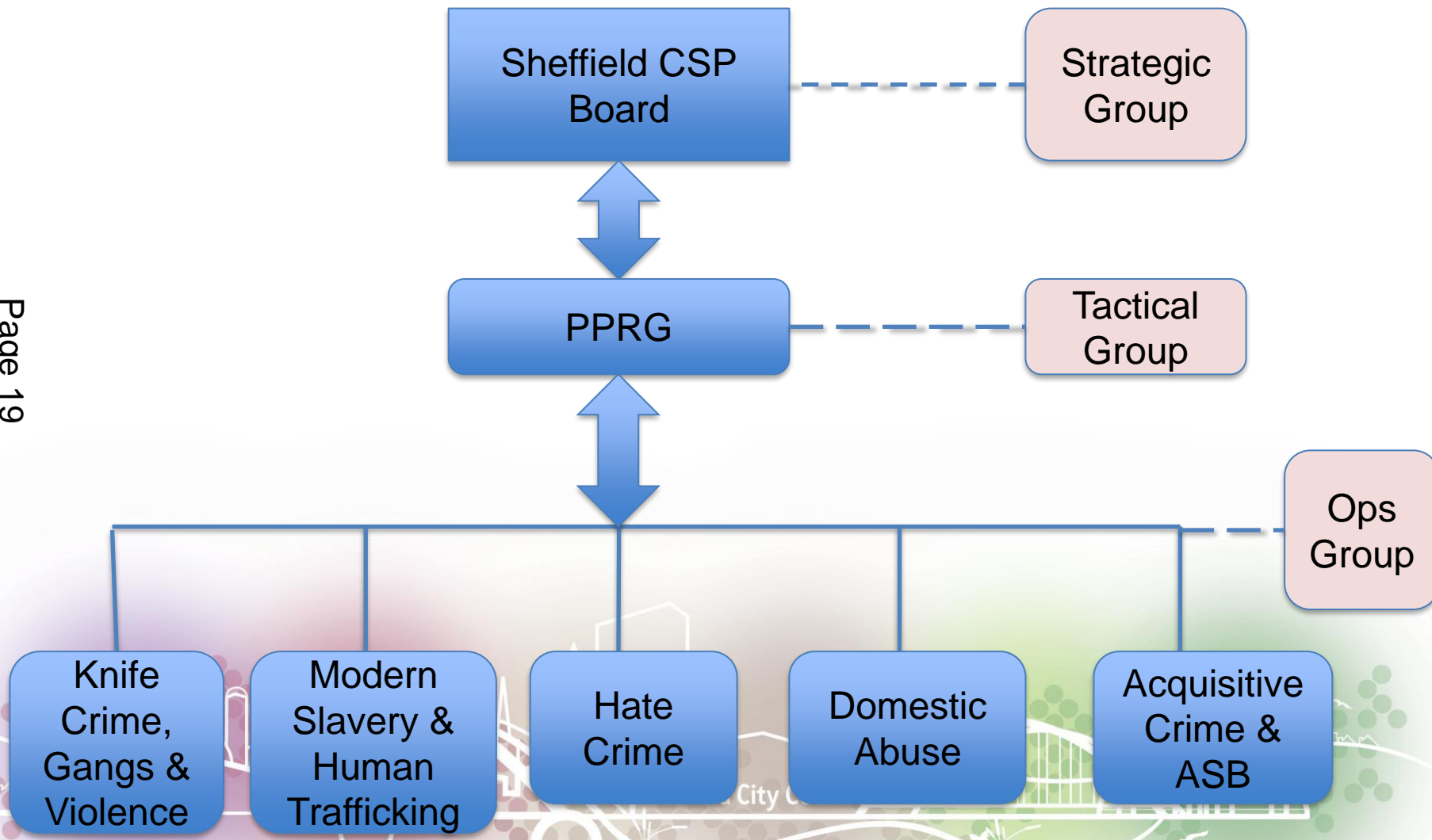
Agenda Item 7

Sheffield Community Safety Partnership

- Statutory Community Safety Partnership (CSP)
 - 6 statutory “responsible authorities” led by Local Authority and Police
 - Bring together expertise, knowledge, consistency of action
- Statutory requirement to have a local strategy for tackling Community Safety

CSP Current Partnership Structure

Page 19



Relationship with the Police and Crime Commissioner

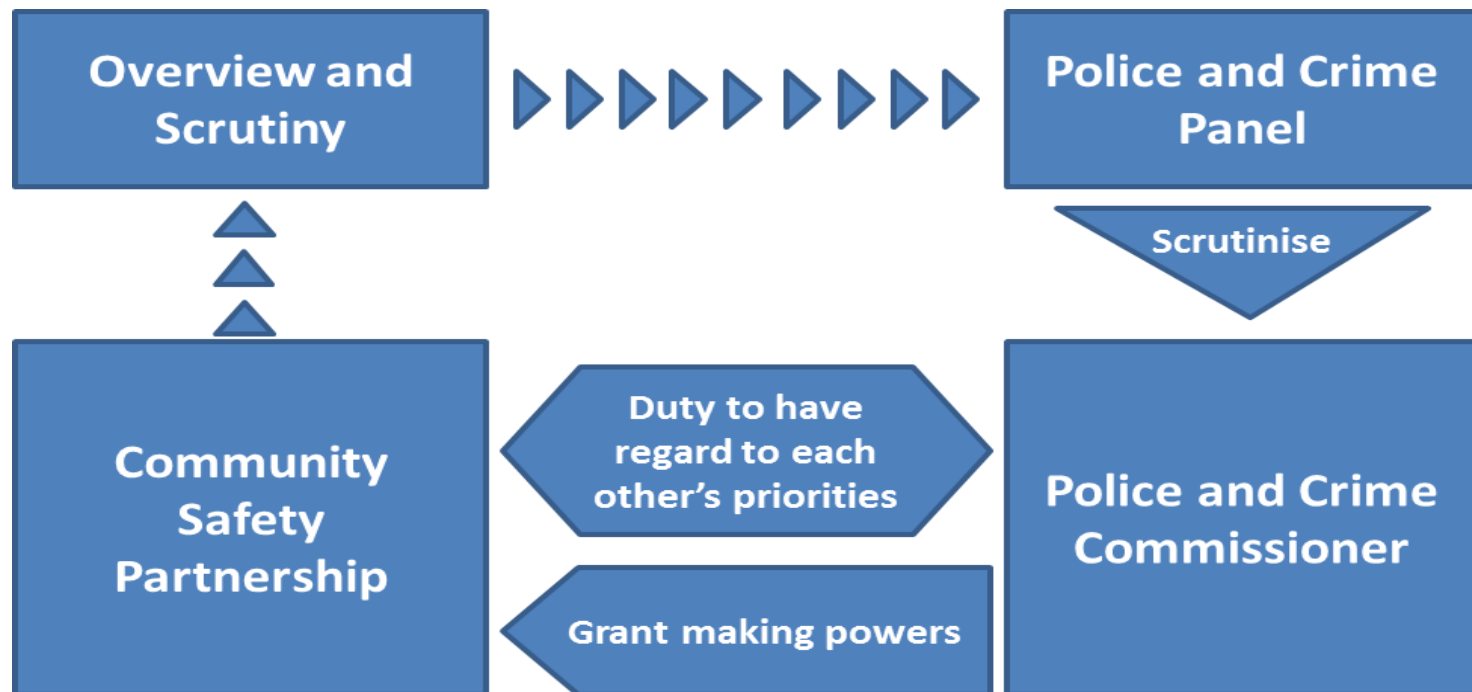
- The Community Safety Partnership and the Police and Crime Commissioner have a duty to have regard to each other's priorities.
- The Community Safety Partnership receive financial support via a grant from the Crime Commissioner to assist in achieving our set priorities



Police and Crime Commissioner

- Police and Crime Panel scrutinises PCC
- Duty for PCC and CSP to have regard to each other's priorities

Page 21



Community Safety Plan / Priorities

- Three Year Community Safety Plan (address priorities)
- Joint Strategic Intelligence Assessment Review
(under taken every 12 months reference to crime and disorder information)

Page 22

New Priorities are currently being determined for period 2021 to 2024 via full JSIA process.

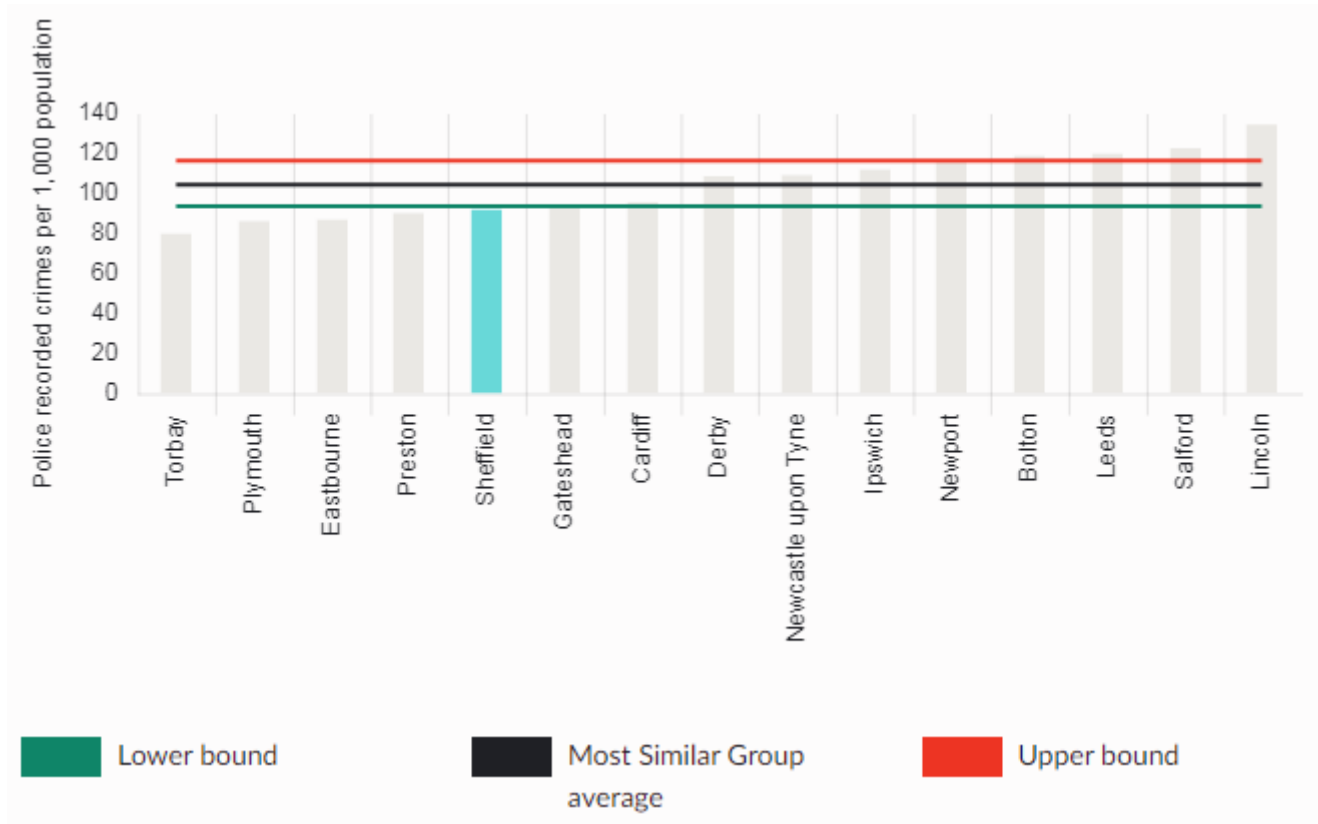
- Current priorities may change as a result of the JSIA Process.
 - Modern Slavery and Human Trafficking
 - Knife Crime, Gangs and Violence
 - Domestic Abuse
 - Hate Crime
 - Acquisitive Crime and ASB

Community Safety Budget 2020/21

- Funding from PCC and SCC
- Fortify and Partnership analysts
- Supporting and protecting vulnerable people
- Hate Crime Coordinator
- Domestic abuse perpetrator programme
- Tackling crime, anti-social behaviour and reducing reoffending by specific projects

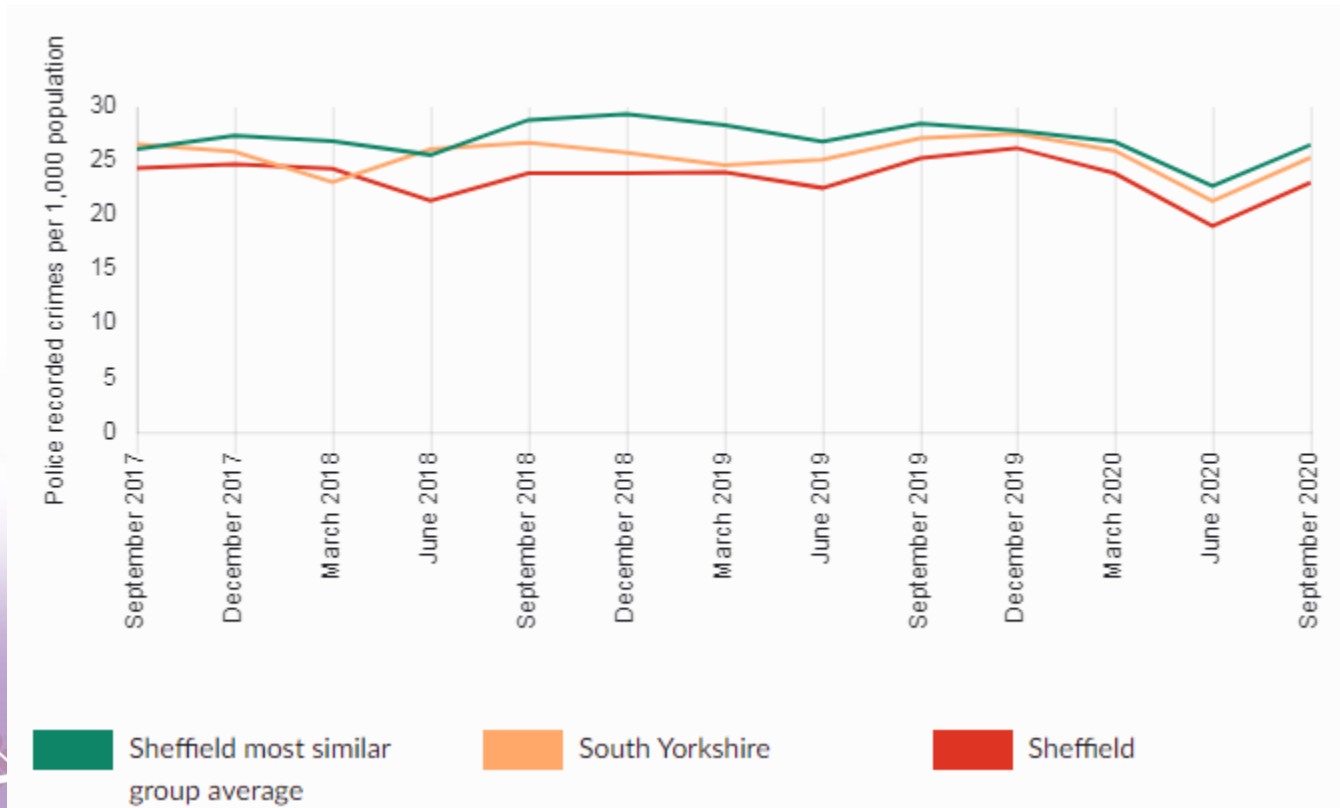
Performance Comparison – most similar groups

All crime per 1,000 population



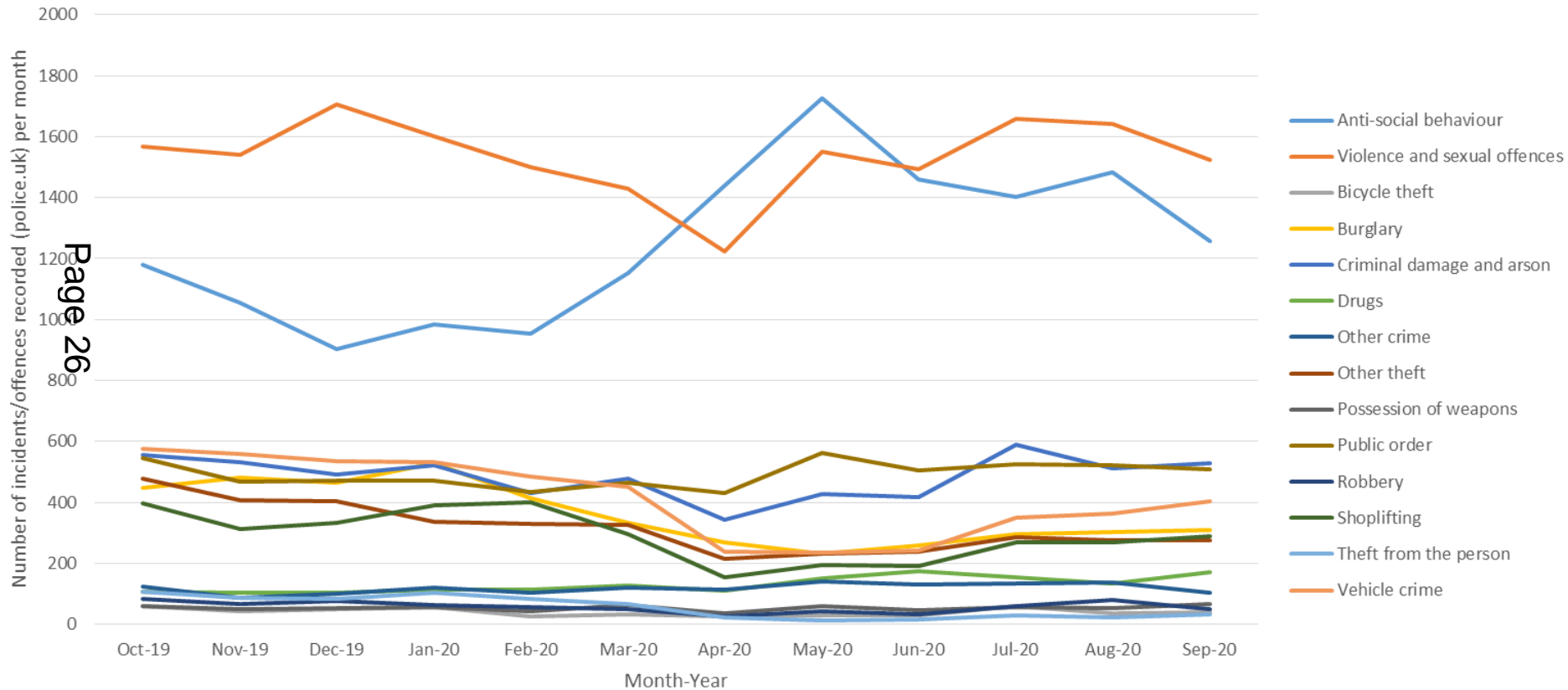
Performance Comparison – National Picture

All crime per 1,000 population



Crime and ASB Totals

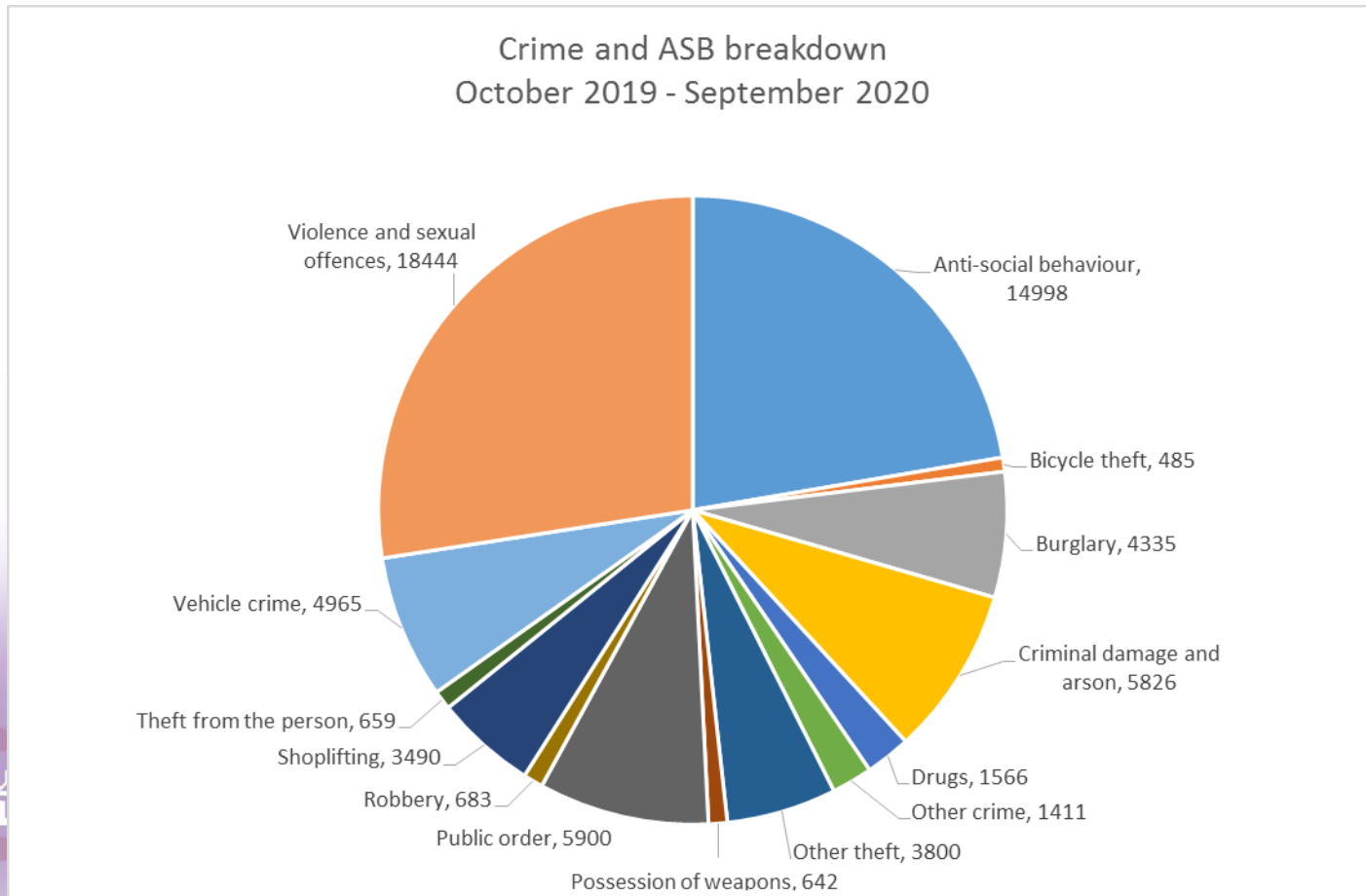
Crime and ASB totals over 12 month period October 2019 to September 2020



Crime Breakdown

Feb 19 – Jan 20

Crime Plus ASB Breakdown for Sheffield



Partnership Activities Summary

- Examples of Partnership Activities:
- Despite COVID Restrictions majority of funded CSP Projects have contributed to achieving their respective aims and objectives for example: Domestic Abuse have implemented Domestic and Sexual Abuse Strategy, Run a Domestic Abuse Campaign during Nov/Dec, Preparation re the new Domestic Abuse Bill and formulating Domestic Abuse Training Packages
- Response to COVID - Partnership have supported and engaged with other stakeholders' in promoting a 'City Centre' Action Plan
- Contributed Staff and expertise to VRU produced Action Plan for Sheffield and assisted in commissioning a number of projects Street Drs, Call It Out (Improving responses to LGBT & DA Victims)
- Currently working with the PCC's office and progressing a bid for Home Office Grant form the 'Safer Streets Fund'
- Reducing Burglary in Student accommodation

Safer Neighbourhood Services

- Partnership team now sat in Communities Service providing an integrated service for Communities linked in to LAC's
 - Community Safety
 - Safer Neighbourhood Co-ordinators
 - Reinstating the Neighbourhood Action Groups (NAG's)
 - Partnership Support
 - Community Justice Panels
 - City Centre ASB
 - Multi Tenure Anti-Social Behaviour
 - Social Housing, Private Landlords. Owner Occupiers
 - Safer Neighbourhood Wardens
 - Home Office Funded Prevent Team
 - South Yorkshire Police - Increase in resources
 - Inspector, Sergeant and PCs including Designing Out Crime Officer (DOCO)
 - ASB Problem Solving Unit – 1 sergeant & 5 PC's
 - Mental Health & Vulnerable Persons Team
 - Partnership Hate Crime Coordinator
 - Community Rehabilitation Company
 - South Yorkshire Fire and Rescue

South Yorkshire Violence Reduction Unit

- One of 18 areas to receive additional funding to form a Violence Reduction Unit (VRU) Unit Based In Sheffield

- Home Office specified a number of mandatory products:

South Yorkshire Area Profile– identifying the drivers of violence in local areas - completed

South Yorkshire serious violence response strategy – setting out the multi-agency response to be delivered by the SYVRU – completed Sheffield now has a Action Plan in place.

Sheffield VRU Action Plan in place managed by CSP Board

- SCC Support seconded staff from SCC are fully embedded within the VRU based in Sheffield
- Home Office Funding for 21/22

Operation FORTIFY

Sheffield's multi-agency approach to tackling organised crime.
Activities undertaken

- Proactive disruption of organised crime gangs (OCG's)
- Asset Recovery
- Executing Warrants
- Drug Seizures
- Weapon Recovery
- Safeguarding Vulnerable
- Prosecute Offenders
- Coordinating Support Services for Vulnerable Adults and Children
- Re Housing high risk / vulnerable where appropriate

Fortify – So What

- Extracted vulnerable male adult from OCG exploitation (cuckooing) and temporarily rehoused outside the city. Male goes on to provide considerable amount of significant evidence around structure of OCG, including confirmation of key players. We have worked with housing and support services in host city to ensure obtains a secure tenancy away from potential exploitation. This has been achieved. Both SCC and SYP officers have not only safeguarded this key individual, but gone the extra mile in ensuring this individual can start anew in a new city. He has now found a job and has expressed his thanks to all involved from Fortify;
- Fortify continues to build up a wide knowledge of county lines, target the OCG organisers and work to support those young people they seek to exploit. The fortnightly Bronze meeting has been coordinating activity to safeguard a young person who has been exploited to run a county line into Merseyside. Colleagues from the Amber Project have been providing face to face support to divert the YP away from this activity and back into education – this has included regular visits and 1-1s, as well as considerable work with the parents in order to restrict movement and opportunities for exploitation. The YP has not subsequently been reported as missing, and work continues to keep them engaged.

Safer Neighbourhood Wardens

- Public Reassurance
 - SCC uniformed presence
 - Eyes and Ears -
- Supporting Social Distancing
- Operation Shield
 - Target Hardening
 - Reduction in Burglaries

This page is intentionally left blank